

## PACKAGE LEAFLET

Information for the user



eylergy.co.uk

### Please read this entire leaflet carefully before use and keep it for future reference.

Ask your doctor, pharmacist or nurse if you need more information or advice.

#### In this leaflet:

1. What are Eylergy eye drops and what are they used for?
2. Before you use Eylergy eye drops
3. How to use Eylergy eye drops
4. Possible side effects
5. How to store Eylergy eye drops
6. Further information

#### 1. WHAT ARE EYLERGY EYE DROPS AND WHAT ARE THEY USED FOR?

- Eylergy eye drops are sterile, preservative-free drops designed to work fast, for effective relief of itchy, inflamed and irritated eyes caused by dust or pollen (e.g. mild hayfever). The drops are also recommended to relieve dry eyes caused, for example, by wearing contact lenses.
- Activated by blinking, the drops work by diluting and rinsing dust and allergens from the eye, and by forming a protecting, lubricating and hydrating film over the surface of the eye.
- Eylergy eye drops are for use by adults, the elderly and children from 6 years of age, and are suitable for contact lens wearers.
- For use in the eyes only.

#### 2. BEFORE YOU USE EYLERGY EYE DROPS

##### Do not use these drops:

- if you are sensitive to any of the ingredients.

##### Take care to keep the eye drops sterile:

Because Eylergy eye drops are specially designed to be preservative-free (thereby making them suitable for use when wearing contact lenses), they are sterile and presented

in pre-filled, single-use plastic droppers.

To avoid microbial contamination, it is very important to:

- use each dropper on one occasion only (normally for both eyes);
- prevent the tip of the dropper, after opening, coming into contact with any surface;
- avoid touching the eyes with the dropper, and;
- dispose of the empty or part empty dropper after use – do not try to re-use it.

##### Contact lens wearers:

Eylergy eye drops are compatible with all types of contact lenses and can be used either before or after lenses have been inserted. See also Section 4 overleaf.

##### Using other medicines:

Although the drops are not known to affect, or be affected by, other medicines, it is best to avoid using them with any other medicines used in the eye unless this is recommended by a doctor. If this is recommended, Eylergy eye drops should not be used until at least 15 minutes after any other eye medicine.

##### Pregnancy and breast-feeding:

This product can be used during pregnancy and by breast-feeding mothers. The ingredients have been in widespread use in this and similar preparations for many years, without reports of problems. However, safety trials have not been conducted.

##### Driving and using machinery:

Your vision may become temporarily blurred initially after inserting the eye drops. If this happens, do not drive or operate machinery until your normal vision is restored.

Continued...

### 3. HOW TO USE EYELERGY EYE DROPS

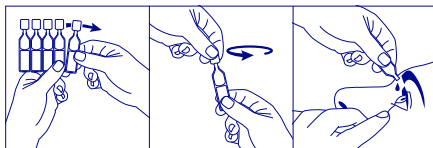


Diagram 1

Diagram 2

Diagram 3

Repeat the following as often as required (always using a **new** dropper):

- Wash hands before use.
- Open foil sachet and detach a plastic dropper (see diagram 1 above). Return remaining droppers to the foil sachet.
- Do not use if dropper is damaged.
- Twist the flat part with the ball tip to detach it from, and open, the dropper (see diagram 2).
- To prevent microbial contamination, do not allow the tip of the open dropper to come into contact with any surface.
- Holding the dropper between the index finger and thumb of one hand, with the tip pointing down over the open eye or over the contact lens, squeeze the dropper and allow 1 or 2 drops to fall into each eye (see diagram 3). Do not touch the eyes with the dropper. Blink the eye to spread the drops and then dab away the excess fluid rinsed from the eye.
- Discard the dropper after use.
- To avoid the risk of choking, keep droppers out of the reach of children under 4 years old.
- An adult should either administer, or supervise the administration of, the eye drops in all children.

Between applications, normal blinking will prolong the effect of the drops by re-spreading them over the eye and maintaining the protective barrier.

The duration and frequency of treatment will depend on individual circumstances and prevailing environmental conditions (dust or pollen etc).

Although Eyelergy eye drops can be used for long periods, this should be discussed with your doctor or pharmacist to confirm the diagnosis. If the signs/symptoms get worse or do not improve, you should consult a doctor or pharmacist.

### 4. POSSIBLE SIDE EFFECTS

Your vision may become temporarily blurred initially after instilling the drops. If this is troublesome, try using fewer drops and/or instil them less often. Due to the viscosity of Eyelergy eye drops you may experience some temporary stickiness on application, especially if you are wearing contact lenses.

Side effects can occur when using the eye drops although not everybody gets them. Rarely, mild and temporary irritation can occur. If this becomes unacceptable, or if you experience any other side effect, stop using the drops and tell your doctor or pharmacist.

### 5. HOW TO STORE EYELERGY EYE DROPS

Do not store above 25°C. Keep out of the sight and reach of children. Do not use after the expiry date shown on each dropper and on the carton. The expiry date refers to the last day of that month.

### 6. FURTHER INFORMATION

#### What Eyelergy eye drops contain:

The ingredients are: carbomer, sorbitol, sodium hydroxide, water.

#### What Eyelergy eye drops look like and the contents of the pack:

The eye drops are presented in 2 foil sachets each containing 10 pre-filled single-use plastic droppers, each containing 0.4 g. This pack contains 20 droppers and this instruction leaflet.



#### Manufacturer:

Diomed Developments Limited, Hitchin, Herts, SG4 7QR, UK.

#### Distributed by:

Diomed Direct Limited, Hitchin, Herts, SG4 7QR, UK.

Eyelergy is a Registered Trademark.

Find out more and buy Eyelergy eye drops at: [eyelergy.co.uk](http://eyelergy.co.uk)

#### Made in France.

**STERILE** Sterile using aseptic processing



Do not reuse



Consult instructions for use



Expiry date

**CE**  
0088

ID8/16/1

This leaflet was last revised in October 2016.